



SPECIFICATIONS

1 General

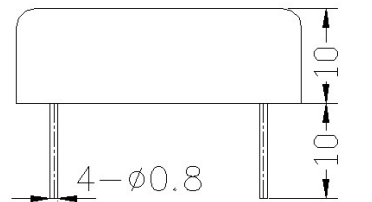
Part Number	Description
150M40B53	150MHz Crystal Filter, DIP Package

2 Revision History

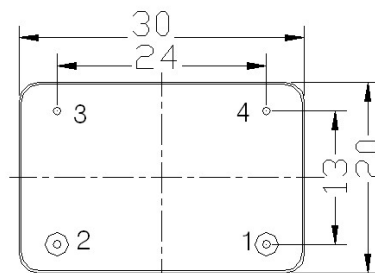
Revision	Released	Revision Detail
R1	2020-10-28	Initial Release

3 Electrical Specification

Item	Typical
Nominal Frequency (Fc, MHz)	150
Insertion Loss (dBc)	≤6.0
Ripple within Pass Band	≤1.0
Pass Band at -3dB (kHz)	≥±20
Attenuation (dB, Fc±100kHz)	≥50
Spurious Response (dB)	≤-20
Input/ Output Impedance (Ω)	50
Operation Temperature (°C)	-20 ~ +70
Storage Temperature (°C)	-40 ~ +80
Package Size (mm)	30x20x10



Pin No.	Description
1	Input/Output
2	Output/Input
3,4	Ground



Unit:mm

Bottom View